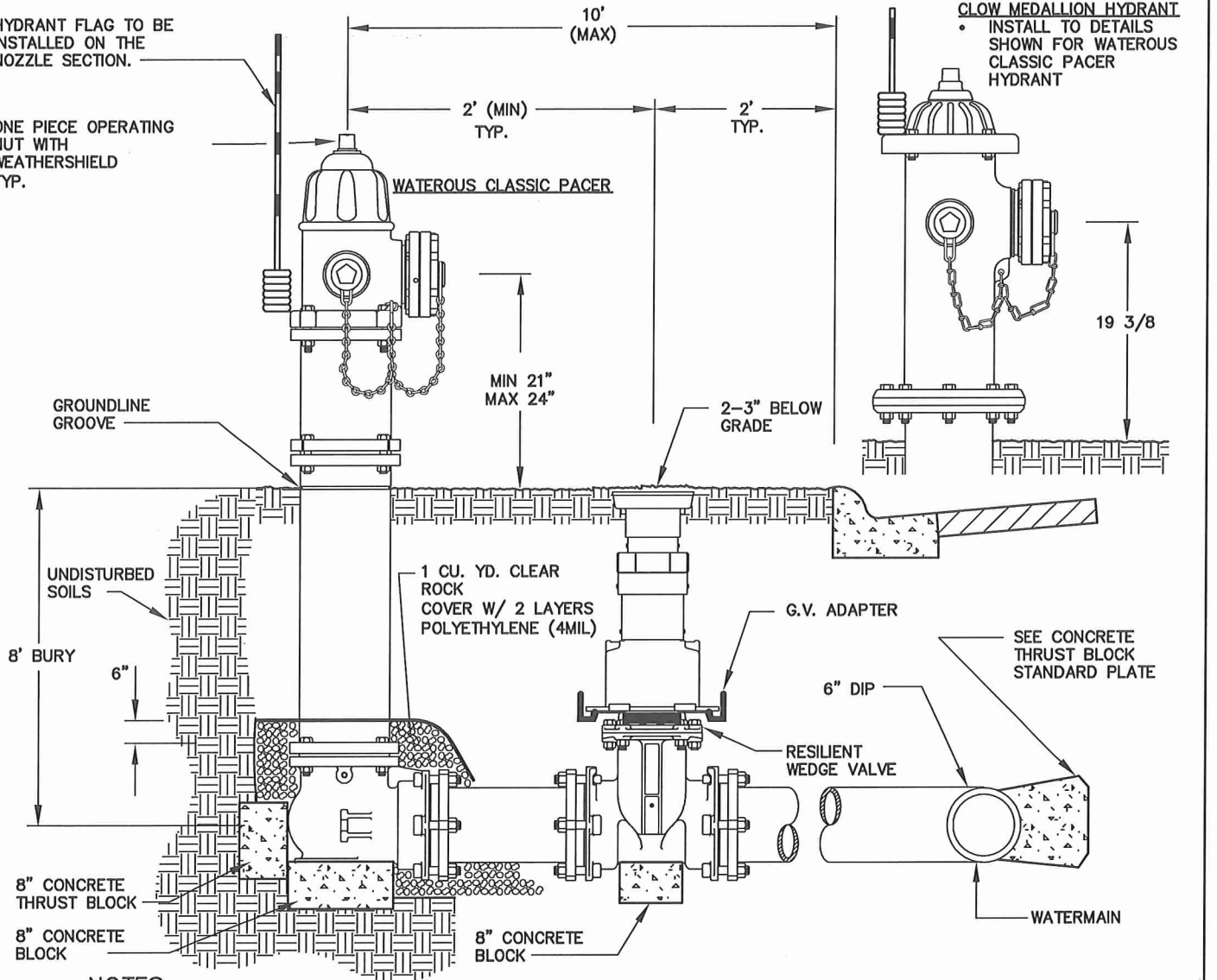


HYDRANT FLAG TO BE INSTALLED ON THE NOZZLE SECTION.

ONE PIECE OPERATING NUT WITH WEATHERSHIELD TYP.

WATEROUS CLASSIC PACER

CLOW MEDALLION HYDRANT
 • INSTALL TO DETAILS SHOWN FOR WATEROUS CLASSIC PACER HYDRANT



NOTES:

HYDRANTS SHALL BE EITHER CLOW MEDALLION OR WATEROUS CLASSIC PACER MODEL WB67-250 BOTH SHOULD HAVE ONE (1)-FIVE AND ONE-QUARTER INCH (5 1/4") STORZ PUMPER NOZZLE WITH 16" BREAK OFF AND TWO (2)-TWO AND ONE-HALF INCH (2 1/2") THREADED NOZZLES.

ALL HYDRANTS AND GATE VALVES SHALL HAVE MECHANICAL JOINT CONNECTIONS. ALL VALVES TO OPEN COUNTER-CLOCKWISE

HYDRANTS TO CONFORM WITH DIMENSIONAL REQUIREMENTS FOR NONTHEADED CONNECTIONS IN ACCORDANCE WITH NFPA 1963 STANDARDS FOR FIRE HOSE CONNECTIONS.

ALL BACKFILL SHALL BE PROPERLY COMPACTED.

2 CANDYCANE STYLE FLAGS PER HYDRANT (ONE INSTALLED, ONE TO EDINA PUBLIC WORKS).

A ONE-PIECE HEAVY DUTY OPERATING VALVE ROD IS REQUIRED ON HYDRANTS THAT ARE EXTENDED 24" OR MORE.

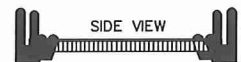
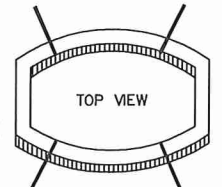
WHEN INSTALLING A HYDRANT ROD EXTENSION, THE NONBREAKABLE COUPLING SLEEVES GO ON THE BOTTOM AND THE BREAKABLE SLEEVES GO ON THE TOP OF THE EXTENSION ROD.

FIRE HYDRANTS SHALL BE PAINTED RED AT THE FACTORY.

POLYWRAP ALL PIPE AND FITTINGS, MEGA LUG ALL FITTINGS, INCLUDE CORROSION PROTECTION AT EACH JOINT.

ALL HYDRANTS SHALL BE INSTALLED WITH STORZ NOZZLE PERPENDICULAR TO ROADWAY.

WEEP HOLE TO REMAIN OPEN.



GATE VALVE ADAPTOR:
 1/4" STEEL WITH PROTECTIVE COATING.

1/2" RUBBER GASKET INSTALLED BETWEEN GATE VALVE AND ADAPTOR.



CITY OF EDINA
 ENGINEERING
 & PUBLIC
 WORKS
 DEPTS.

HYDRANT AND GATE VALVE

Clayton A. Miller
 APPROVED: CITY ENGINEER

REVISED:
 01-16

STANDARD
 PLATE
 100